

Summer Exhibition 13th and 14th May 2017 - 10am to 5pm



The Garden Courtyard at Project Workshops

It's the weekend of May 13th and 14th, and you're in front of the telly, and wondering whether you should mow the lawn - and then a voice breaks the silence, "Right, up you get. Off to the Project Workshops Summer Exhibition".

Wait...what? But before you know it, you're in the car, and turning into the farm. But then you do a double-take because there, in front of you, is a stunning, twice life-size sculpture of a horse.

What follows is a whirlwind of studios. Upstairs, downstairs, and on to the next building. Canvas given life in vibrant colours; more beautiful sculpture than you can shake a stick at. Look... there's a bronze deer - and a hare! So life-like it looks as if it will... Bronze owl, ceramic dogs. Oh, I really love that piece. I wonder... Finely-worked pewter; stone carving; exquisitely crafted furniture. And in every studio, a welcoming artist happy to talk about their work. It all makes for thirsty work. But fear not. Aha! Refreshments! Don't mind if I do. Lovely.

A few moments to reflect. That piece... I really do love it... Off you go again. There's a crowd in that building. It's the glassmakers' workshop. There is a lump of molten glass on the end of an iron and you watch, transfixed, as the glassblower, with apparent ease, transforms it into a Georgian drinking glass. You could watch this magical metamorphosis for hours on end. But you tear yourself away. One more thing to see.

The Foundry. The jewel in the crown of the workshops. Subtle patinas, burnished bronze. Finally a finished work of art. And that's you too. Finished. Deeply contented. Elevated. The Project Workshops Summer

Exhibition a perfect delight. When's the next one, you wonder? Better head home, I suppose... A nagging thought. That piece...could I...should I...? Oh, hang it, yes. I love it and I'm having it! I promise I'll mow the lawn when I get home...

Amy Goodman - Sculptor and Portrait Artist

Amy has been commissioned to create a life-size bronze statue of Bellerophon and Pegasus, the symbol of the British Army's Airborne Forces. It will be unveiled in May, outside Brigade HQ in Colchester.

Amy will be busy working on a show jumper, 'Alvin', by the open Weekend, and will also have newly-cast editions of 'Treo' available.



Bellerophon astride Pegasus

Treo was the military dog who, with handler Dave Heyhoe, saved many lives in Afghanistan. Sales of these will help raise additional funds, enabling her to create a life-size memorial to him this summer.

Amy is also painting a bench as part of 'Sitting With Jane', a public art trail celebrating Jane Austen's connections with Basingstoke and her birthplace, Steventon, in commemoration of the 200th anniversary of her death. Amy's bench, 'Jane and Her Forgotten Peers' will be sited in the grounds of Winchester Cathedral.

Robyn Golden-Hann - Stone Carver and Letter Cutter



Robyn's WRNS 100 monument

With over 25 years experience, and established for 11 years at Project Workshops, Robyn continues to hone her craft in the design and execution of fine bespoke monuments and memorials, hand-carved in stone and slate using

traditional techniques.

Robyn has created many military monuments in her career, and is currently carving a Portland stone monument for WRNS 100, celebrating a century of women's service in the Royal Navy. This stone, weighing over a tonne, will feature various WRNS headdresses, with an inscription and badge. It will be sited at Portsmouth Cathedral, and unveiled in November 2017, and will mark Robyn's fifth commission for the Cathedral to date.



Ava Reeves - Artist

It has been an exciting and interesting first year for me in Project Workshops and I have found that moving from London into the countryside has subtly influenced my colour and space within my work.

I am more and more excited by the landscape especially, and now that the weather is better, intend to go out into the countryside and draw, which I hope will inspire more painting.

Currently I am interested in memory and experience and my impressions of how that might look in abstract form, colour and shapes.

This year I have also been experimenting with ceramics and jewellery, so I hope to have some pots and necklaces on show. I always like to challenge myself to try new mediums; it shakes things up a bit, gets me out of my comfort zone, and influences the painting, which is always a good thing.

Damien Rochford - Sculptor

Working from my studio here at Project Workshops where I have been now for (I can hardly believe it), three amazing years, I specialize in figurative sculptures of animals, birds and human portraiture. Sculpting in either clay, wax, or plaster, my references are gathered from drawings, photographs, or, when I can, from life, then my finished pieces are moulded and cast in either bronze or stone resin.

My most recent finished pieces are two Bengal Tigers, the originals of which were made in clay, which will be cast in bronze and sold through galleries around the country as limited editions.



Mark Taylor and David Hill - Glassmakers

Mark and David research and reproduce ancient and historical glass. This involves experimental work, both in the UK and in Germany, and collaboration with archaeologists, students of glass, and other glassworkers.

Our reproductions sell to those involved in education and historical research, collectors, film and TV programme makers, as well as the fans of those programmes: our 18th century glasses and bottles are in great demand, particularly from the fans of 'Outlander'.

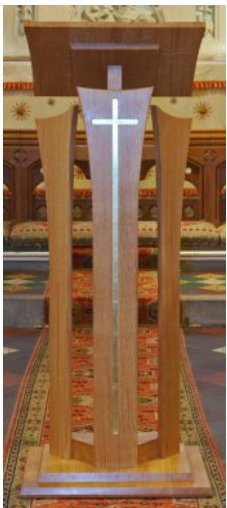
During the first months of 2017 we produced late 17th century glass for a forthcoming movie about Queen Anne, 'The Favourite', starring Olivia Colman, and we will once again be working at wood-fired furnaces in Germany and Belgium later in the year.

Soraya French - Artist

Soraya combines a successful exhibiting career with teaching mixed media courses at her studio and a number of venues in the UK and abroad. She is a regular contributor to The Artist magazine, and her fourth book, entitled "Contemporary landscapes in Mixed media" (Batsford) will be launched in June 2017.

Soraya is Vice President of the Society of Women Artists, and will be exhibiting her work at their annual exhibition.

Soraya's September painting trip to the South of France is fully booked, but there are still a few spaces available on the trip to Portugal in October 2017.



Tim Chadsey - Furniture Maker

I have recently completed two commissions for churches: a priest's chair for the Lady Chapel at St. Peter's, St. Mary Bourne, and a new lectern for St. Mary's Newtown, both in English oak. I enjoy ecclesiastical work, especially if I can introduce a modern design that harmonizes with a medieval building. In the order book at the moment is a dining table with a live edge slab top (it retains the wavy edge of the tree with only the bark removed - something I haven't done before), a pair of bedside tables and a third kitchen table with through drawers.

"Furniture which people can look at happily day after day and also functions as it is supposed to – that's what good design is all about."

Reginald Thompson - Lamp-blown Glass

Reg joined us at Project Workshops approximately nine months ago, after working for many years as a scientific glassblower. His unique range of glass earrings and perfume bottles, which he has been developing over the last few years, will be available for sale at the Summer Exhibition.

Reg works in the tradition known as 'lamp-working', whereby, using a high temperature torch, and boro-silicate glass, he is able to create an infinite variety of shapes and designs, often incorporating combinations of colours as well as innovative twists and turns.



Sally Milligan - Artist

Last winter I travelled to the Southern Ocean and Antarctica. Such a strong connection with nature, emotion and extraordinary scenery is impossible to forget, and I feel my work may change during the year.

I used watercolour and gouache, something I haven't done for many years, so have decided to revisit these while continuing to use my still favourite: oils. Working in Hampshire offers such beautiful countryside but I will spend time on the coast in South Pembrokeshire, and am visiting Washington State, USA in the Spring.

During the year I will be in four Group Exhibitions and continuing my Oil Workshops here in the studio.



Matt Duke - Sculptor

After an extremely successful year I am looking forward to a fantastic Open Studios this May, where I will be debuting new pieces of work.

Luna has now truly flown the nest as the edition has now completely sold out, in under a year!

With an increase in sales throughout the range, notably Barn Owl, Patience and Harley, and with all three editions now coming to an end, my focus for the spring will be to produce new work. I have been developing ideas around 'impact' - the relationship between shape and force, and creating studies of wildlife. I am also keen to explore silver as a finish, and the new perspective and sentiment that this will bring to the work.

Marek Woźnica - Metal Worker

Marek grew up in London where his father had a jewellery workshop, and started metalworking from an early age. Years of apprenticeship led him to develop his own style of making sculpture to wear, and enabled him to accumulate the body of work he has to offer today. Continually striving to take his work to the next level, Marek has created a unique range of vessels and other ornamental objects to complement his collection of animal miniatures carved in pewter.

Now in 2017, for the first time, Marek is sculpting larger pieces and figures in clay, which he then moulds and eventually casts in pewter.



Elaine Peto - Ceramicist

As ever, I will be continuing to create my animal sculpture in stoneware and porcelain clay. I will be tackling various subjects, not just farm and domestic animals and wildlife, and this may include re-visiting some of the Mythological subjects, such as Minotaurs and Centaurs that I have touched on in the past, but would like to explore further.

I am currently working on a commission of studies of dogs for a client, and recent work has included African wildlife, such as this lioness.

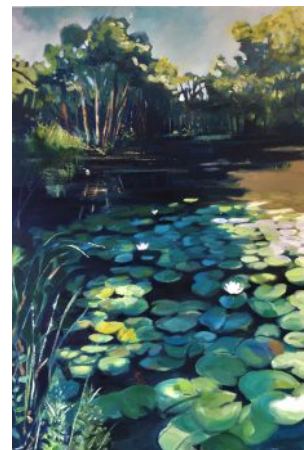
Alongside my drawings, I'm also exploring the possibilities of etching and printmaking.

Linda Powell - Artist

My paintings reflect the woods and small lakes and ponds of Wiltshire, mostly in oils or acrylics. In contrast, visits to Salisbury Plain, and the views across farmlands on my way to the studio have resulted in some big sky and open view paintings, often in watercolours.

With spring and the hopeful colours and cheering flowers appearing, floral still life paintings are appearing on my easel, and these make ideal subjects for my classes - a change from the compositional challenges of winter landscapes.

My favourite equine subjects are losing their winter fluff. Once their rugs come off, more of their elegant forms will be appearing on my canvases, and I have commissions to paint two small children this summer, a delight and a challenge.



Geoff Hague - Knifemaker

Geoff designs and makes elegant folding pocket knives and fixed blade knives. All components are made in his workshop where he also heat treats the steels he uses.

Demand for his work is such that he is currently working on commissions, but is still making time to develop new designs.

Talos Art Foundry - Bronze Foundry

Talos
art foundry

At Talos we are launching the new 'Talos look', designed to attract a new generation of artists to the foundry, whilst maintaining our enviable reputation for quality and reliability amongst our regular clients.

The logo has been designed to give a modern slant to our centuries-old craft, and will be stamped onto all bronzes cast by us at Project Workshops from 2017.

We never cease to be amazed and delighted by the variety and quality of the sculptures which artists bring to us.



Naturally, much of our work is for sculptors at Project Workshops, and as usual, Vivi Mallock and Amy Goodman have been keeping us busy. The open days are a great opportunity to see how artists like these work together with the foundry to make major pieces of public sculpture, from start to finish.

Controlling the pour of molten bronze

Weekend Refreshments from MYO

MYO Street Food serves delicious, home-made and locally sourced food out of two converted vintage Renault Estafettes.

'MYO' stands for 'Make Your Own', meaning that customers can create a drink or dish that is perfectly tailored for them.



life studio at Project Workshops

Our weekly Pilates and Yoga classes continue in this lovely venue as do the Life Drawing Classes with Amy Goodman on Wednesday evenings and painting classes with Linda Powell on Friday mornings.

If you are interested in any of these classes or would like to hire the Life Studio for workshops, meetings or classes, you can contact Mandy on 01264 889889 for further details.

Resident Artists Exhibitions 2017

Elaine Peto

9th - 11th June: *The Contemporary Craft Festival*, Bovey Tracey

3rd - 9th July: *Society of Women Artists Annual Exhibition*, The Mall Galleries, London

18th - 20th August: *Art In Clay*, Hatfield, Hertfordshire

Soraya French

1st - 16th April: *AppArt Exhibition*, Prior's Field School, Godalming

11th - 14th May: *Affordable Art Fair*, Hampstead Heath, London

3rd - 9th July: *Society of Women Artists Annual Exhibition*, The Mall Galleries, London

Vivien Mallock - Sculptor



The past eight months have been spent working on the memorial for the Devon and Dorset Regiment, due for installation in the National Memorial Arboretum in September.

The central figure, representing a soldier from the amalgamated regiment in the 1970s, is depicted on patrol in Northern Ireland. A standing soldier from the Dorset Regiment is shown during the battle of Kohima in WW2. The trio will be completed with a Devon soldier at

the Battle of the Somme.

Other projects have been on hold during this work, although a short safari in Kenya last December yielded a small bronze of an elephant and her offspring, which will be donated to the Elephant Watch charity.

Mandy Atkinson-Willes - Potter

Mandy is able to combine owning and running Project Workshops with her keen interest in ceramics. The time she has to spend on her own work is very limited, but she is continuing to develop her colourful domestic stoneware pots.



There is always great excitement with the glaze firing which happens in a gas kiln. The air flow is limited to create a reducing atmosphere in the kiln, which makes the clay body speckled and the glazes to really melt into the pots.

Her work will be on display in the Life Studio at the Summer Show along with invited visiting artists, print makers, photographers and jewellers.



The Garden at Project Workshops

All artists can be contacted through the Project Workshops website, and studios are open to visitors by arrangement.

Open Studios Weekend 13th - 14th May 2017

Christmas Sale Weekend 2nd - 3rd December 2017