

Open Studios Weekend in May 2015



View of Project Workshops from Talos Art Foundry

We were fortunate to enjoy the perfect weather for our Open Studios, which resulted in a steady flow of visitors all weekend, many staying for longer than they had originally planned, as there was so much to see and enjoy, not least the delicious refreshments supplied by Parsonage Farm.

Many had come to see Vivien Mallock's memorial to the British soldiers who took part in the battle of Waterloo being made in the Talos Art Foundry. The memorial records the moment when British soldiers closed the gates of Hougomont Farm – an action pivotal to the final victory. One of the life size bronze soldiers was on display in the foundry, and attracted much interest from military historians. The two stone slabs representing the gates were later inscribed by Project Workshops letter-carver Robyn Golden-Hann, who accompanied Vivien for its unveiling on the 200th anniversary of Waterloo on 18th June 2015.

Sculpture lovers were treated to an exhibition of new work by Richard Atkinson-Willes, whose elegant plywood constructions were joined by a colourful display of new stoneware ceramics by Project Workshops co-director Mandy Atkinson-Willes.

The fractured remains of Amy Goodman's 'Warhorse' memorial, which was the centrepiece of our sculpture exhibition last year, were so striking that they were left in the grainstore for visitors to enjoy, providing as strong a message by their enigmatic state of decay as the piece itself. Damien Rochford's monumental sculpted head was also impressive, and provided a centrepiece to the display of his beautifully finished sculptures in Unit 8.

Elsewhere, visitors enjoyed the diverse range of work now being produced by Project Workshop's painters: Soraya French's studio was full to capacity all weekend with buyers and admirers of her acrylics,

Continued on Page 4

The Romsey War Horse

The Romsey War Horse was commissioned to commemorate the 120,000 horses, mules and men that were trained for the front line at the Romsey Remount Depot during WW1. The memorial depicting a horse and soldier, was unveiled by Princess Anne on the 3rd July 2015 in Romsey's War Memorial Park. Representatives from the Household Cavalry, King's Troop and the R.V.C, as well as 'Joey' from the 'War Horse' stage play were also in attendance, and with the sun shining, it was a very special day.

The sculptor of this life-size memorial, Project Workshops resident, Amy Goodman says: "It was such an honour to make this piece. I hope I have gone some way towards showing the bond between horse and soldier in a natural and subtle way. They are both a bit thin, the soldier has his arm in a sling, I wanted the young trooper to carry the weight of the world on his young shoulders, through the horrors he has witnessed. You can see this in his face. I wanted it to be an emotive piece with respect for historical detail."

Now safely installed, the horse and soldier has been drawing many visitors to Romsey and the feedback has been overwhelmingly positive. Amy can't wait for another opportunity to sculpt another life-size horse in the future.



Amy with the War Horse and Trooper Memorial

Christmas Sale Weekend 21st and 22nd November 2015 - 10am to 5pm



Elaine Peto - Ceramicist

Elaine continues to expand the range of hand-built ceramic animals that she has become famous for. Her subjects include farm animals such as bulls, donkeys and billy-goats, domestic animals such as elegant greyhounds, wild animals including foxes, hares and warthogs, as well as mythological Minotaurs and Centaurs.

Her current work includes a new series of bird sculptures in porcelain, and lively groups of animal figures such as boxing hares.

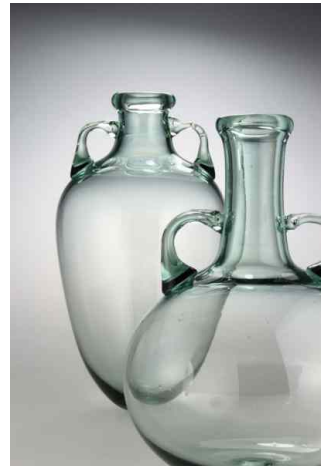
Mark Taylor and David Hill - Glassmakers

Now in their 20th year at Project Workshops, Mark and David continue their historically-informed work reproducing drinking glasses and other vessels from the 18th century, as well as Roman items

Recently, they have experienced a hitherto-unprecedented demand for examples of 18th century drinking glasses and bottles that they made for the first season of the American TV series set in 1740s Scotland, 'Outlander', based on the best-selling novels, which began airing in 2014.

This year sees trips to Germany (twice) and Belgium to work at the Roman-style wood-fired furnaces (inspired by their own Furnace Projects in 2005 and 2006) that have been built at museums. A major project to reproduce a large quantity of French drinking glasses for the 18th century French Canadian Fort of Louisbourg, is currently being undertaken.

Other projects for 2015 included creating yet more Roman-style glass vessels for Grayson Perry.



Sally Milligan - Artist

This last year at Project Workshops has been a very creative one and Sally has now participated in three group exhibitions, all with good sales.

Having spent the Spring and Summer sketching in Hampshire, Wales and France, she is planning some larger work, as well as her pochade paintings. 'Painting is so much to do with the emotions, translating them to canvas always a challenge'.

There is a continuous programme of workshops planned for the Autumn and into the New Year.

Damien Rochford - Sculptor

This past few months has been a really creative and productive time for me. My bronze bird sculptures have proved very popular and are selling well through galleries. This has given me the opportunity to develop some new works including...

...a large sculpture of a Warbler atop a spherical form

...a life size wren sculpture, also atop a spherical form. Available now as a new limited edition bronze.

Other pieces to be finished soon include a fox, and two monumental hands forming a set to compliment the large male head exhibited at our last Open Weekend.

I have plans to run some sculpture workshops this autumn, so please give me a call if you are interested.



Tim Chadsey - Furniture Maker

Over the last year I have been working more with introducing greater variety of tone into my work through the use of stains and ebonizing, and I have been extremely pleased with the positive feedback I have received from clients.

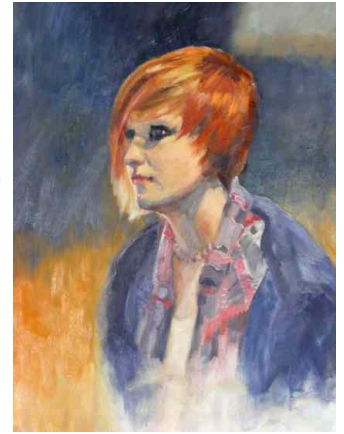
At present I am developing new speculative pieces for exhibitions at the Celebration of Craftsmanship and Design in Cheltenham in August, and at Dovetail, organised by Rum's Eg Gallery in Romsey, which will be held in Romsey Abbey in August of this year.

Linda Powell - Artist

Linda has been painting several portraits in oils, and working on a series of figure and equine studies in mixed media, though, more recently, landscape subjects have taken precedence.

Linda's painting and drawing classes are flourishing, and she has stepped in to teach the Project Workshops' Life Drawing class on Wednesday evenings.

Linda will be opening her studio to visitors in August during the Hampshire Open Studio event.



Geoff Hague - Knifemaker

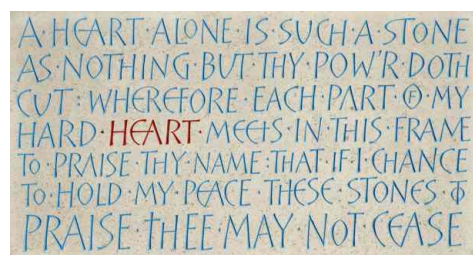
Geoff's customer portfolio continues to expand with new commissions recently coming from Australia, South Africa and France, together with a continuously strong order book - all is set to make 2015 a busy and interesting year. Currently on the bench are five pieces for one customer which will shortly be sent to Italy to be engraved.

Marek Woźnica - Metal Worker

Following a successful Open Studios Weekend, Marek continues to send his greyhound designs around the world.

Meanwhile, during spare moments, he is spending the summer developing another pewter/wood chess set in time for our Christmas show, this time involving more metalwork, and on a specific nautical theme. With Neptune as the king, and the Warrior Mermaid of Warsaw as the queen, the other pieces will include a squid as the bishop, a lighthouse for the rook, and prawns for pawns.

This set will be made using sycamore for the white wood, and brown burr oak for the dark, with the burr voids filled with gold resin in a Kintsukuroi style.



Robyn Golden-Hann - Letter Cutter

Now in her tenth year at Project Workshops, Robyn has established a firm reputation for hand-carved lettering and stonework. Her 2015 commissions include a carved stone clock-face for Horatio's garden at Salisbury District Hospital, and she worked closely with resident sculptor Vivi Mallock on the design and execution of all stonework and inscriptions for the battle of Waterloo bicentennial monument.

Robyn undertakes commissions for bespoke memorial work, plaques and monuments as well as exhibiting sculptural stone lettering. She will be showing work at the Garden Gallery, Broughton, Hampshire for the third year running.

Tim and Soraya French - Artists

We have already conducted seven of our two day workshops successfully this year and Tim has posted our workshop days for 2016 on our website and some sessions have already been booked.

Soraya is currently teaching a painting course in Provence and has another painting trip to the Manzac area in the south of France in early September. She is also working towards Hampshire Open Studios and other upcoming exhibitions, such as a three man show at the Wykeham Gallery with Mike Bernard and Tessa Lawton, and an exhibition at The Mall Galleries in Autumn, plus many more.

Tim and Soraya will be attending a gathering organised by Golden Artists Colours for all their working artists and educators from around the world for a week of seminars as well as attending the exciting Art Basel in Miami in December.

For further details of their events please check their website.





The Princess Royal with Amy Goodman at the unveiling of the War Horse and Trooper in Romsey

Continued from Page 1

and attracted aspiring artists to sign up for her ever popular painting courses, which run throughout the year. Painting tuition is also offered by Linda Powell and by Sally Milligan, who is now well established in her new studio.

Marek Woznica's beautifully crafted pewter and wood Chess Set, which featured on all the promotional leaflets and posters was even more astonishing in real life, and impressed visitors with the intricacy of its design, and finesse of craftsmanship.

Glassmakers Mark Taylor and David Hill, assisted by Tracey Snape, entertained everyone with their glassblowing demonstrations all day, and by their enthusiasm for all things glass, and many visitors left with another piece of Georgian or Roman glass to add to their collections.



A corner of the garden at Project Workshops, with a view of the Pottery

Project Workshops - Studios to Rent

There is currently a rare opportunity to join the nationally acclaimed group of artists at Hampshire's Project Workshops. One 53 square metre studio and one 65 square metre studio are available to let, exclusively to artists or craftsmen. Both offer 24-hour access, secure, serviced studios with good parking and facilities. For further details contact Mandy on mandy@project-workshop.co.uk or call 01264 889889.

All artists can be contacted through the Project Workshops website, and studios are open to visitors by arrangement.

The next date for your diary is the Christmas Sale Weekend on 21st and 22nd November 2015

Project Workshops, Lains Farm, Quarley, Andover, Hampshire SP11 8PX 01264 889889 www.project-workshop.co.uk

From Quarley to Waterloo

Over the last year or so, Project Workshops has been the principal workbase for the sculpture for the first British memorial to those who fell at Waterloo 200 years ago. Vivien Mallock won the competition to design and sculpt the monument, and Robyn Golden-Hann was responsible for all the stonework featured in the finished work, which was unveiled on June 17th by the Prince of Wales.

Depicting the crucial moment during the battle on June 18th 1815, the monument shows two British Foot Guards soldiers closing the gates of Hougoumont Farm against the frantic French effort to turn the right flank of Wellington's army.

The component parts were two bronze life-sized figures, and several pieces of Priory Stone, all of which arrived at the farm on the morning of June 10th. Although it was planned to complete the work swiftly, it took two whole days' hard labour to complete the installation.



Vivien Mallock, Jay Battle and Robyn Golden-Hann working on Vivien's sculpture at Hougoumont Farm

The photograph shows Vivien, Jay Battle (a stonemason from Pitton) and Robyn at the final stages of the installation of the memorial. A week later, the official unveiling by HRH Prince Charles was a memorable occasion, where all present pronounced the memorial a fitting tribute to those brave soldiers who fought all day, and died to change the course of European history.

Open Studios Weekend Charity Raffle

Thanks to the artists for donating examples of their work for the raffle. £131.11 was raised for MIND.

life studio at Project Workshops

Our weekly Pilates and Yoga classes continue in this lovely venue, as do the Life Drawing Classes with Linda Powell on Wednesday evenings, and the Painting Classes, also with Linda on Friday mornings.

If you are interested in any of our classes, or would like to hire the Life Studio for workshops, meetings or classes, you can contact Mandy on 01264 889889 for further details.