

Cylindrical Tankards

(a summary by Roman Glassmakers)

(All drawings are at scale 1:2)

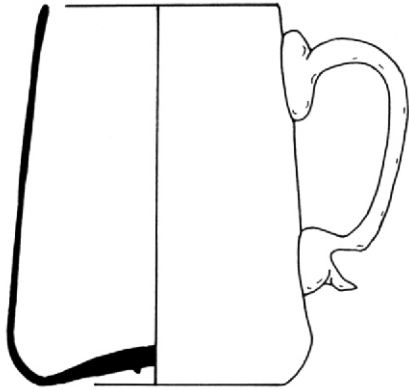


Figure 49 Plain cylindrical tankard

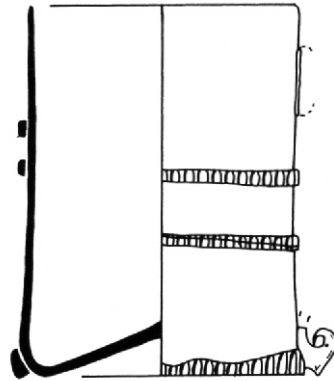


Figure 50 Cylindrical tankard with a rigaree trail

Cylindrical tankards, made from green-tinted glass, have only been found in Chester (both examples are from Hunter Street, Chester) and Newcastle upon Tyne. They date to the first half of the 17th century.

One reason for their seeming rarity is that handle and body fragments may easily be attributed to cylindrical beakers and jugs from this period.

Reference:

Willmott, Hugh (2002) 'Early post-medieval vessel glass in England c. 1500-1670' Council for British Archaeology: CBA Research Report 132 p.55. Types 8.1 and 8.2